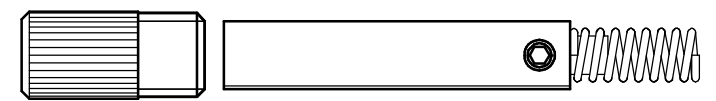
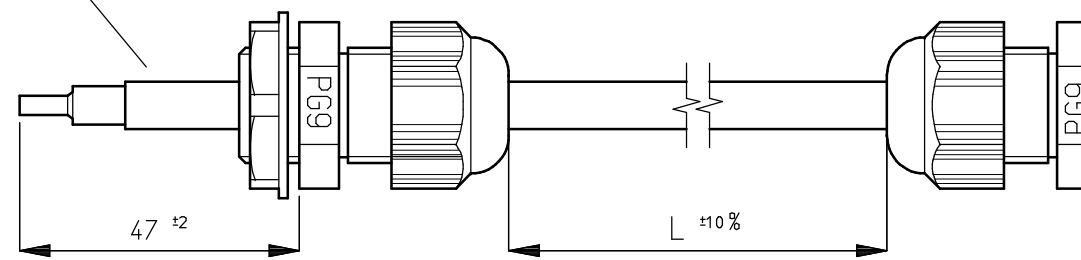


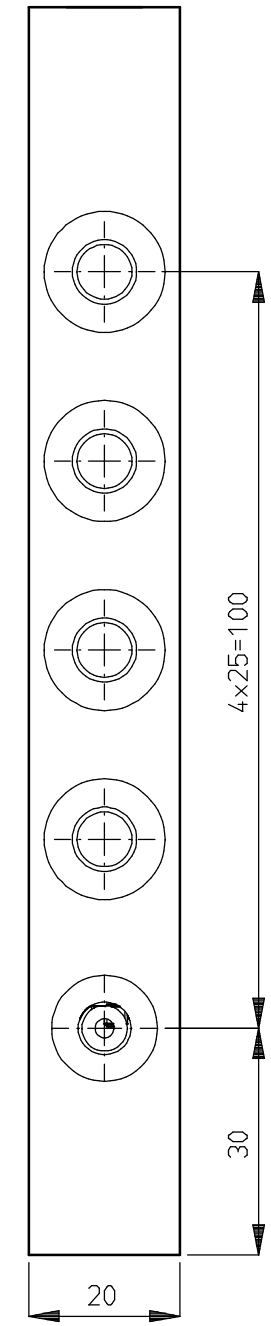
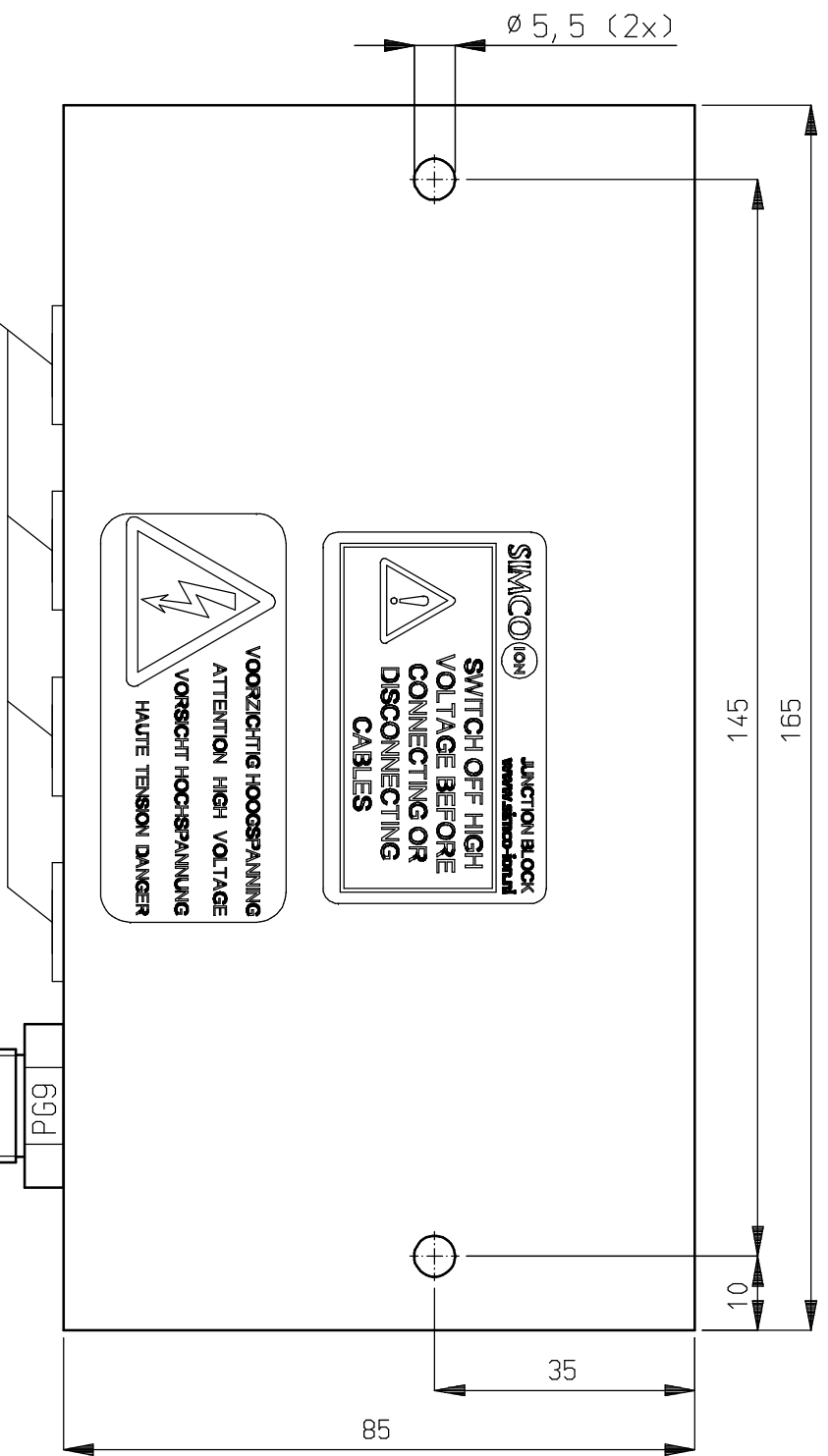
4x output for spring loaded 7 kV connector (A3030)



HV-input connected to powerunit
7 kV MAX



Standard: non-protected HV-cable



 An ITW Company	Name: Junction block 4 pos. 4-7 kV AC					Drawn: MVN	Part no.: -
	CAD generated NOT updated	Dimensions in mm	Date: 30-08-2000	A3	M: 1:1	ECN2011-070	Check: -