



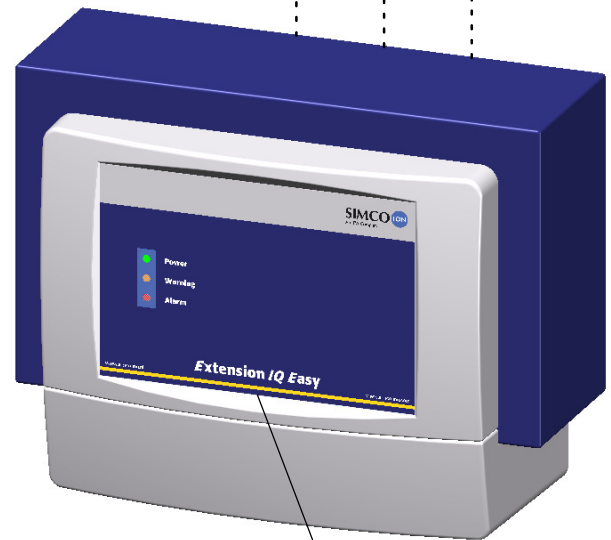
Manager IQ Easy
 1030000000 - 24 V DC powered
 1030000010 - 100-240 V AC powered

Connector IQ M12 male angled
 5 pole (screw connections)
 7519020357 - \varnothing 4-6 mm cables
 7519020358 - \varnothing 6-8 mm cables

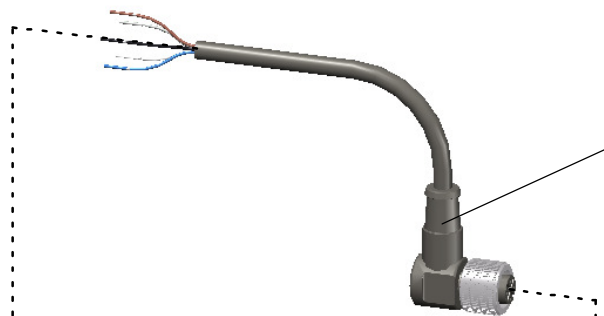
Sub-D connector
 male 25 pole
 P/N 3900236025

Power cord IEC-C13
 2 m, with lock
 P/N 9146340700

24V power connector
 for \varnothing 4 - 6,5mm cables
 P/N 9370000205



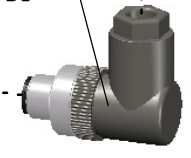
Extension IQ Easy
 1030000100 - 24 V DC powered
 1030000110 - 100-240 V AC powered



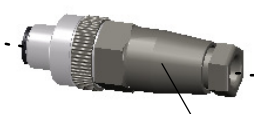
Cord device M12 female angled 5 pole
 7519020375 - 5 m, unshielded
 7519020376 - 10 m, unshielded



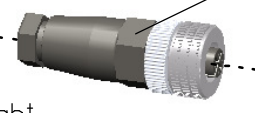
Cord device M12 female straight 5 pole
 7519020365 - 5 m, unshielded
 7519020366 - 10 m, unshielded



Connector device M12 female angled
 5 pole (screw connections)
 7519020355 - \varnothing 4-6 mm cables
 7519020356 - \varnothing 6-8 mm cables



Connector device M12 female straight
 5 pole (screw connections)
 7519020350 - \varnothing 4-6 mm cables
 7519020351 - \varnothing 6-8 mm cables



Connector IQ M12 male straight
 5 pole (screw connections)
 7519020352 - \varnothing 4-6 mm cables
 7519020353 - \varnothing 6-8 mm cables



Cord device M12 female-male straight 5 pole
 7519020390 - 2 m, unshielded
 7519020391 - 5 m, unshielded
 7519020392 - 10 m, unshielded



Cord device M12 female angled-male straight
 5 pole
 7519020395 - 2 m, unshielded
 7519020396 - 5 m, unshielded
 7519020397 - 10 m, unshielded

 An ITW Company www.simco-ion.nl Tel: +31 (0)573 288333	Name: Manager/Extension IQ Easy overview connections				Drawn: AB	Part no.: —
	CAD generated NOT updated	Dimensions in mm	Date: 6-2-2014	A3 M: —	ECN-	Check: -